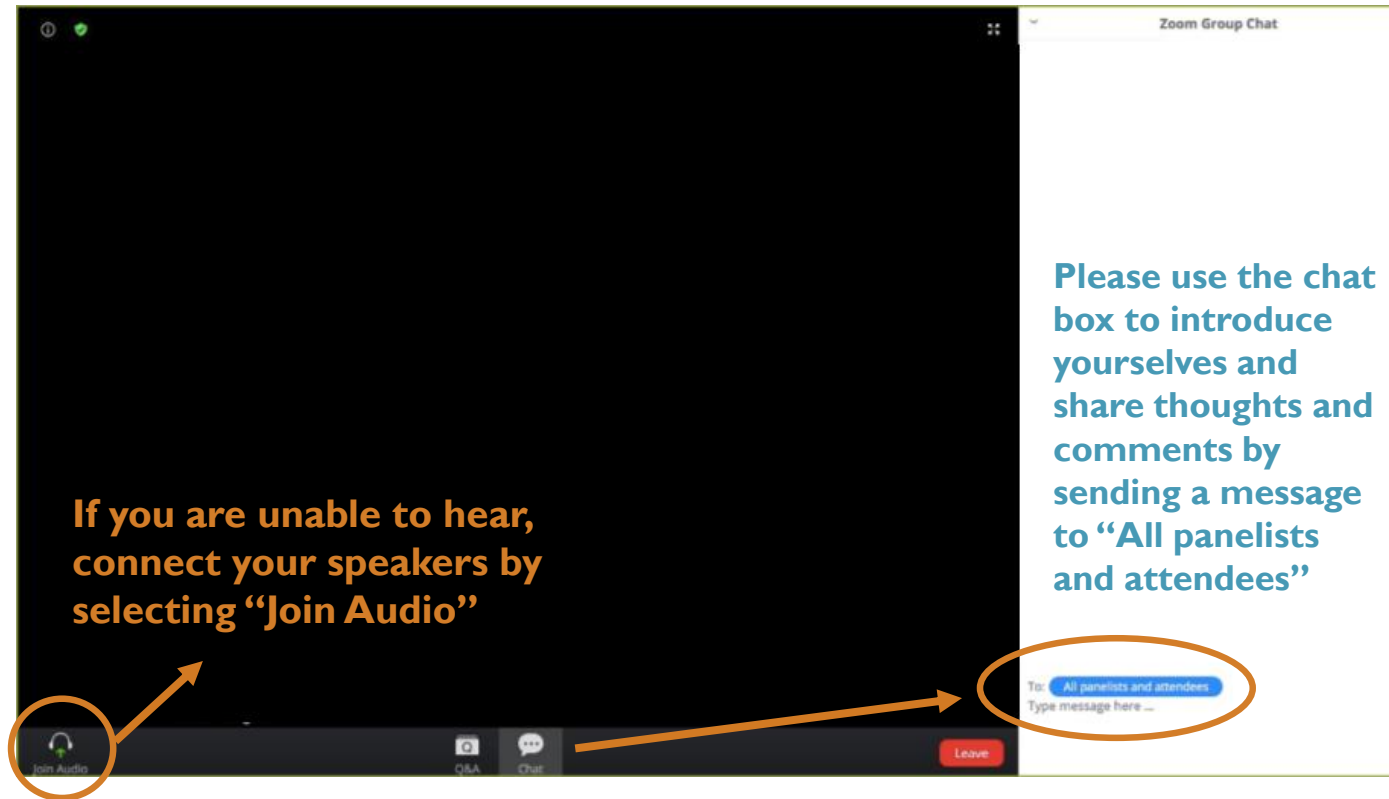


# SPOTLIGHT ON COMMUNITY SUPPORTED AGRICULTURE

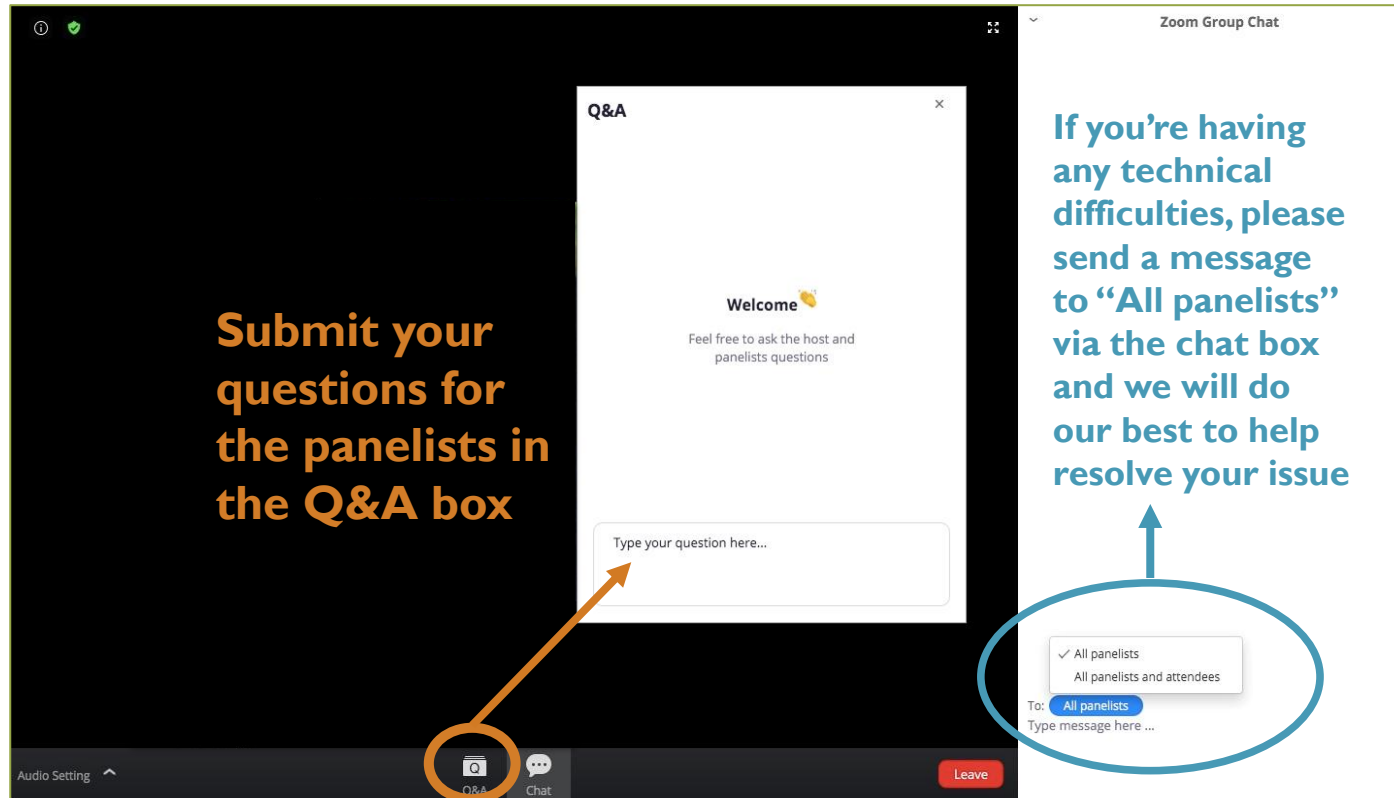
9<sup>th</sup> July 2022

Quintin Gray | Rudy Pacumbaba | Devonte Howard | Mariam Yakubu | Ivan Solomon

# WELCOME TO THE ZOOM WEBINAR



# Q&A AND CHAT



**Submit your questions for the panelists in the Q&A box**

**If you're having any technical difficulties, please send a message to "All panelists" via the chat box and we will do our best to help resolve your issue**

The image shows a Zoom interface with two windows. The left window is titled "Q&A" and contains a "Welcome" message and a text input field labeled "Type your question here...". The right window is titled "Zoom Group Chat" and contains a message about technical difficulties. In the chat window, the recipient selection dropdown is open, showing "All panelists" selected. In the Zoom bottom toolbar, the "Q&A" icon is circled in orange, and the chat recipient selection area is circled in blue with an arrow pointing to the text above it.



# FEED THE FUTURE

The U.S. Government's Global Hunger & Food Security Initiative

**Introduction by:**



**Quintin Gray**

**Agriculture Advisor (1890 Universities Foundation)**

**Founder – Q. Gray and Associates**

**Lead Instructor – FDA Foreign Supplier Verification Program (FSVP)**



**GERALD J. AND DOROTHY R.**  
Friedman School of  
Nutrition Science and Policy



# FEED THE FUTURE

The U.S. Government's Global Hunger & Food Security Initiative

The MSI Student Working Group Presents

## Spotlight on Community-Supported Agriculture

Zoom Webinar | Tuesday, July 9th, 2024 | 10:00-11:00AM (CST)

*\*The MSI Student Working Group is a student-led group created by the Feed the Future Food Systems for Nutrition Innovation Lab & the 1890 Universities Foundation.*



**RUDY PACUMBABA, PhD**

*State Extension Specialist,  
Program Coordinator, Alabama  
Cooperative Extension System*



**DEVONTE HOWARD**

*Food Hub Director,  
Dreaming Out Loud Inc.*

### MODERATORS



**IVAN SOLOMON**  
*Tuskegee University*



**MARIAM YAKUBU**  
*Alabama A&M University*



**USAID**  
FROM THE AMERICAN PEOPLE



Gerald J. and Dorothy R.  
Friedman School of  
Nutrition Science and Policy





# FEED THE FUTURE

The U.S. Government's Global Hunger & Food Security Initiative



# Supply Chain Issues of the Agricultural Industry

Presented by: Rudy Pacumbaba

July 9, 2023 / Urban Agriculture



**USAID**  
FROM THE AMERICAN PEOPLE



GERALD J. AND DOROTHY R.  
Friedman School of  
Nutrition Science and Policy

## URBAN AGRICULTURE SUPPLY CHAIN AND NUTRITION

- Urban Agriculture: 'It is the cultivation, processing and distribution of agricultural products in urban areas.' Small scale operations include, community gardens, roof top gardens, hydroponics, aeroponics aquaponics, and vertical production facilities.
- This method of agriculture has the potential help with supply chain issues by “buying local” and reducing the distance for transporting agricultural products.
- The Supply Chain in agriculture was tested during the Covid-19 crisis. We witnessed sporadic shortages of several agricultural products.
- As a result, the sudden and unexpected availability of agriculture products impacted the nations food supply and nutrition.

## TOP HEADLINES

- Usually has something to do with supply chain issues
- Goods of all kinds tend to be short supply
- Several goods are imported
- So, what is happening at the grocery store?

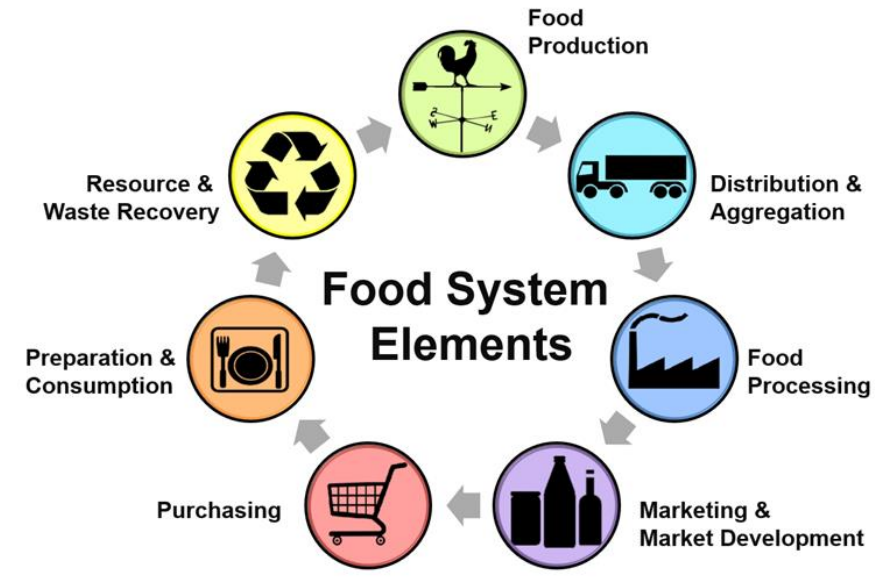




# CHALLENGES FACING THE U.S. AGRICULTURE INDUSTRY

## Supply Chain Issues:

- Transportation Costs
- Labor Availability
- Rising Energy Costs
- Obtaining Input Supplies
- Getting Products to Market



*Adapted by Christy Shi, from Cornell University, Discovering the Food System; A Primer on Community Food Systems: Linking Food, Nutrition and Agriculture.*

## WHAT CAUSES SUPPLY CHAIN ISSUES?

Labor Shortages

Lack of skilled labor on the Farm

Processing Facilities

Various Service Providers (State Coop, State and Federal Inspectors)

Inadequate Labor Availability is the largest supply chain constraint for the US agriculture Industry

Problems filling positions in the production, transportation, warehousing, and processing phase of the supply chain



## PORTS, TRUCKING & RAIL FREIGHT

- Over 70% of ALL freight movement occurs on trucking and rail.
- The trucking industry has **LABOR** shortages.
- Estimates the industry needs over 60K additional drivers to meet current demand.



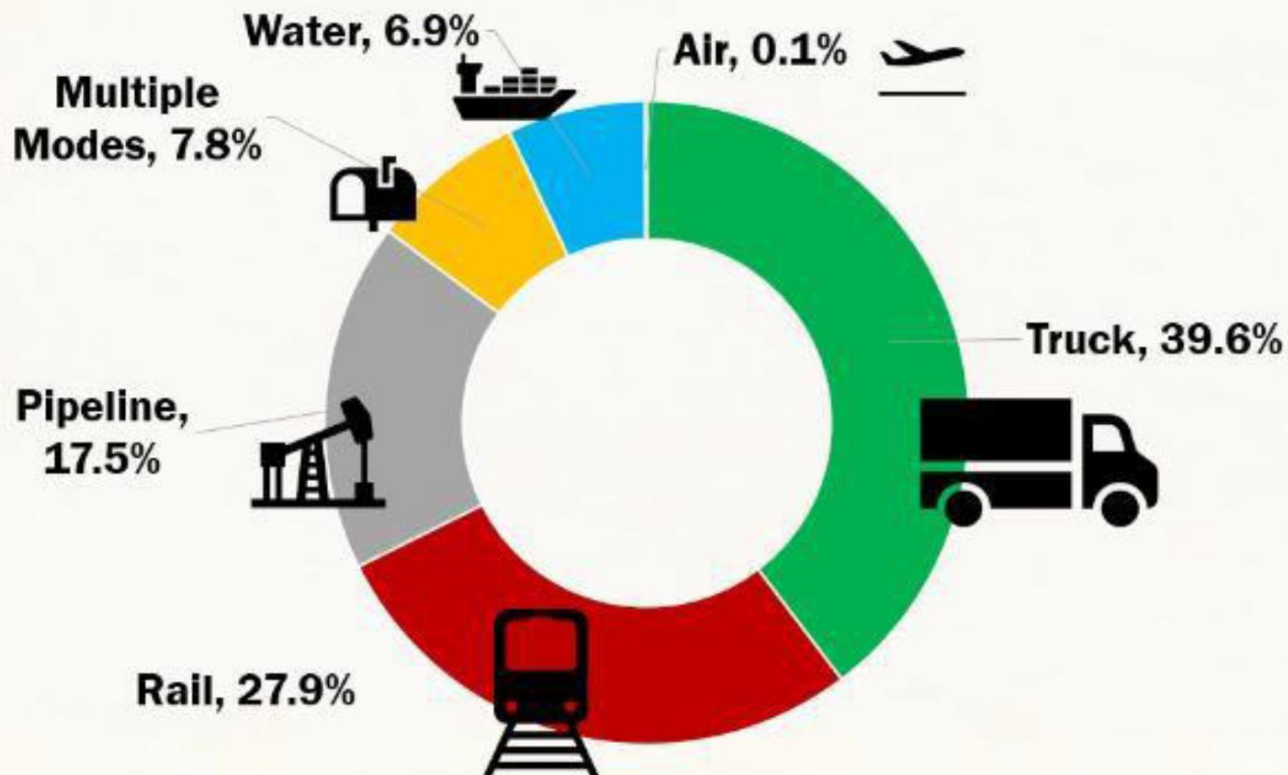


# FEED THE FUTURE

The U.S. Government's Global Hunger & Food Security Initiative

## TRUCK & RAIL NETWORK ACCOUNTS FOR NEARLY 70% OF U.S. FREIGHT MOVEMENT

Measured by ton-miles (length and weight of freight travels)



 AMERICAN FARM BUREAU FEDERATION\*

Source: DOT, Federal Railroad Administration



**USAID**  
FROM THE AMERICAN PEOPLE



GERALD J. AND DOROTHY R.  
Friedman School of  
Nutrition Science and Policy



## PORTS, TRUCKING & RAIL FREIGHT

- 60K will triple in demand by 2028.
- This does not adjust for expected retirements.
- Adjustments indicate the industry will need to hire 110K new drivers a year to meet demands.



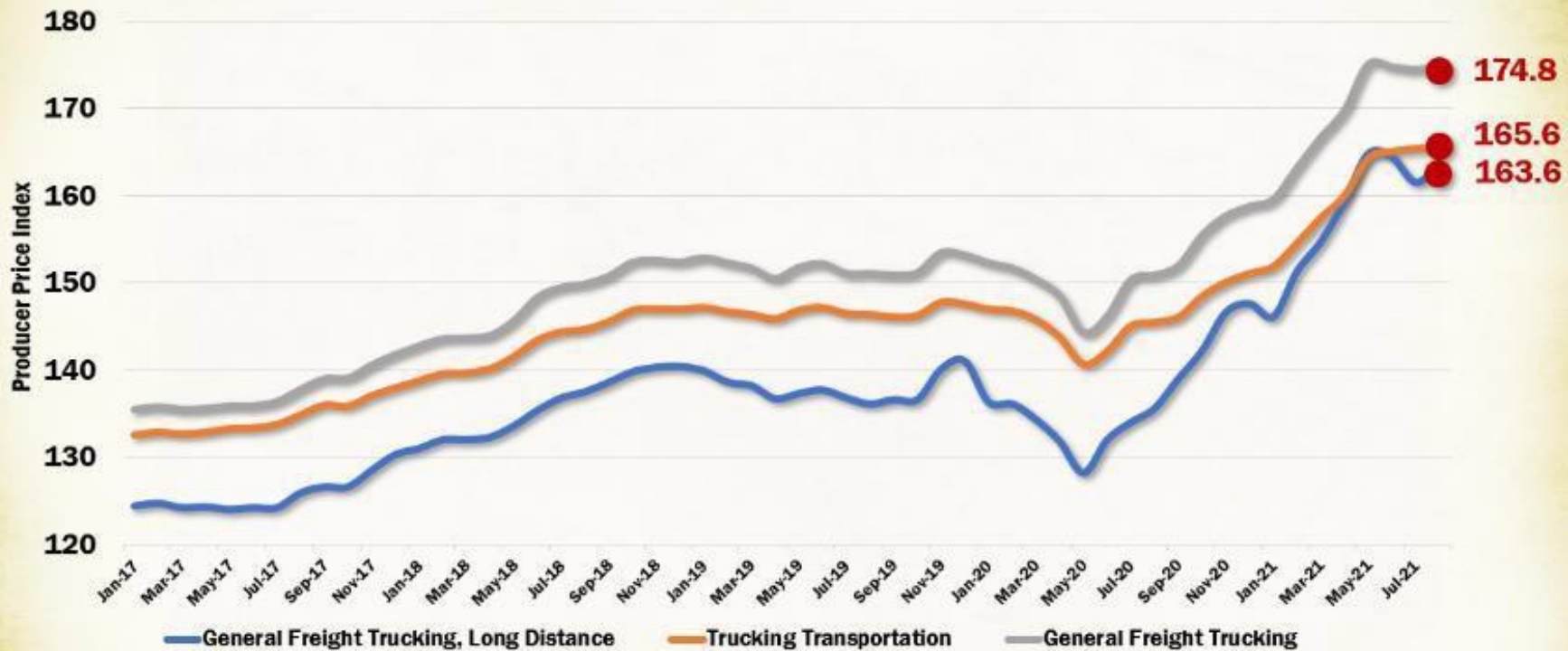


# FEED THE FUTURE

The U.S. Government's Global Hunger & Food Security Initiative

## PRODUCER PRICE INDEX: TRUCKING

Index Dec 2003 = 100 | Jan 2017 – Aug 2021



AMERICAN FARM BUREAU FEDERATION\*

Source: Federal Reserve Bank of St. Louis



**USAID**  
FROM THE AMERICAN PEOPLE



GERALD J. AND DOROTHY R.  
Friedman School of  
Nutrition Science and Policy



## PORTS, TRUCKING & RAIL FREIGHT

- Rail rates on corn, soybean and wheat have increased.
- Fuel surcharges have increased as well.
- The rate to transport ethanol via rail have increased (18%).





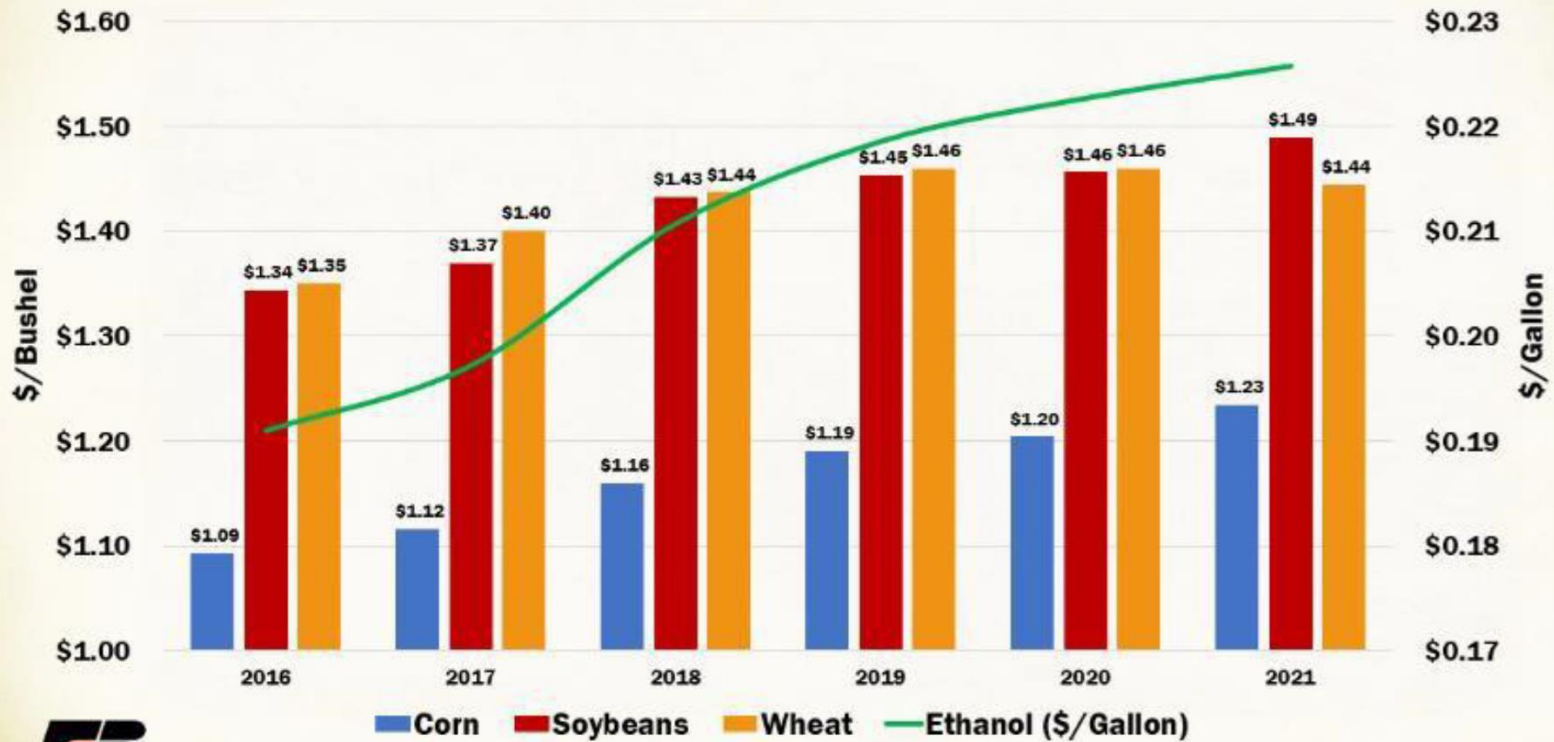


# FEED THE FUTURE

The U.S. Government's Global Hunger & Food Security Initiative

## AVERAGE GRAIN AND ETHANOL RAIL TARIFFS OUTPACE PRIOR YEARS

Includes Fuel Surcharge (per mile per car)



**AFB**  
AMERICAN FARM BUREAU FEDERATION\*

Source: AFBF Calculations, USDA Agricultural Marketing Service



**USAID**  
FROM THE AMERICAN PEOPLE



GERALD J. AND DOROTHY R.  
Friedman School of  
Nutrition Science and Policy



## PORTS, TRUCKING & RAIL FREIGHT

- While U.S. farmers are facing supply and labor shortages on the domestic front.
- Trade ports around the world are attempting to ease congestion by delaying overseas shipments and raising shipping costs.
- The Abrupt shift in demand and backlogs of the supply chain don't seem to be easing anytime soon (Federal Maritime Commission)



## FERTILIZER

- Global demand for fertilizer has increased.



- Increased demand for fertilizer leads to elevated prices for farmers (particularly for grain farmers).



### Factors negatively influencing the market:

- global demand for fertilizer, which is largely driven by crop plantings and prices,
- recent weather events that disrupted domestic production,
- COVID-19-related deferral of facility maintenance that is now being undertaken,
- trade actions,
- transportation costs,
- supply and cost of natural gas.



## FERTILIZER

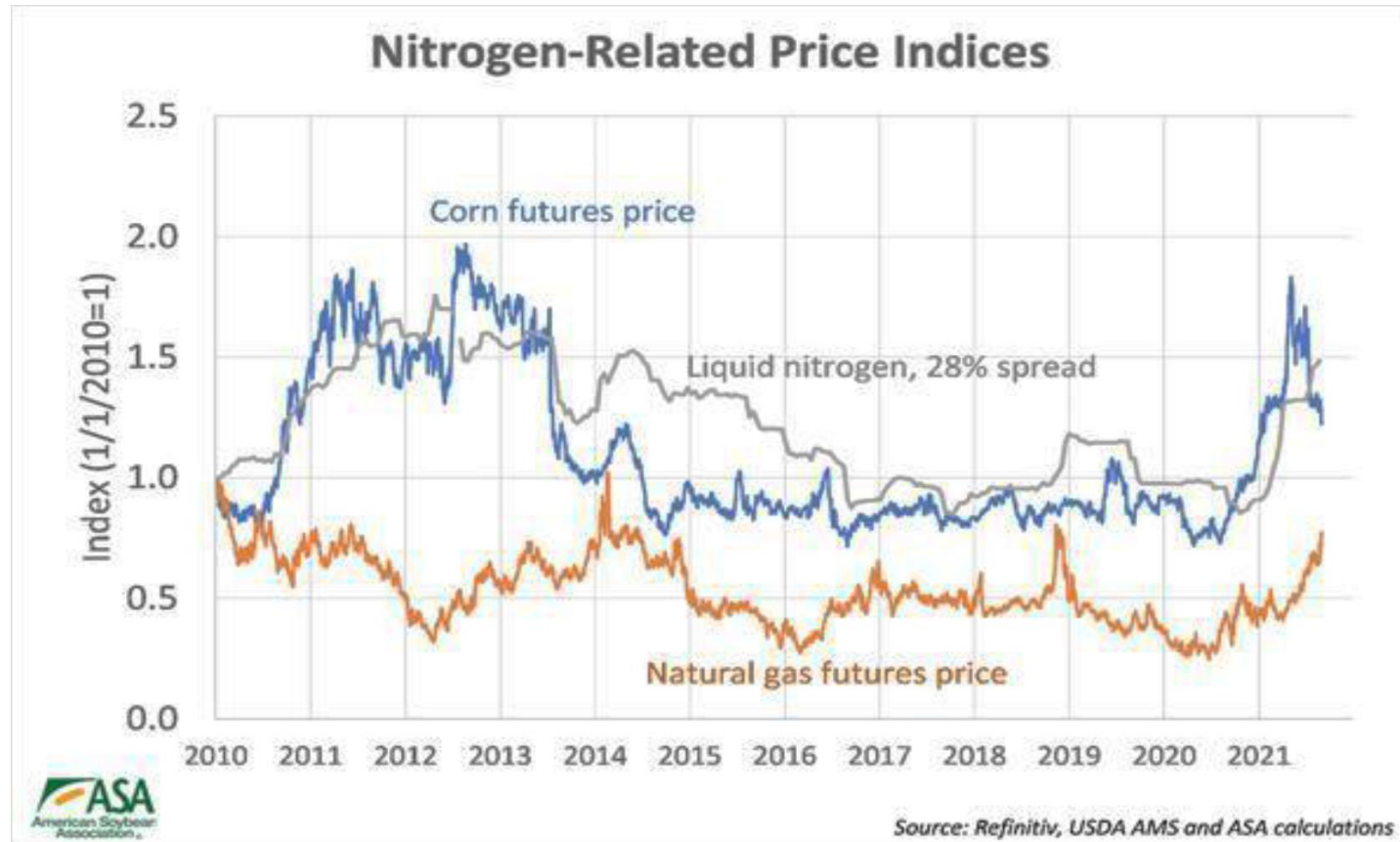
- Natural Gas is the primary feedstock and process fuel for ammonia production.
- Natural Gas price increases also increase the cost of ammonia production.





# FEED THE FUTURE

The U.S. Government's Global Hunger & Food Security Initiative



GERALD J. AND DOROTHY R.  
Friedman School of  
Nutrition Science and Policy





# FEED THE FUTURE

The U.S. Government's Global Hunger & Food Security Initiative



## COMMUNITY-SUPPORTED AGRICULTURE IN WASHINGTON, D.C.

JUNE 25, DREAMING OUT LOUD, INC.

*Photo credit: DREAMING OUT LOUD, INC.*



**USAID**  
FROM THE AMERICAN PEOPLE



**DREAMING  
OUT LOUD**  
INC.



GERALD J. AND DOROTHY R.  
Friedman School of  
Nutrition Science and Policy

## MISSION

**Dreaming Out Loud, Inc. is a 501(c)3 nonprofit social enterprise working to rebuild urban, community-based food systems, increasing access to healthy food, empowering low-income entrepreneurs/cooperatives, and helping at-risk adult residents obtain sustainable, family-supporting wages.**

We adhere to the belief that:

- All communities deserve equal access to fresh, healthy food
- Achieving optimal health of community members requires moving beyond the “access” paradigm to a focus on community self-determination.
- Attaining food sovereignty requires control of food resources and food system assets - including land and water, food-related enterprises, capital, and labor - by community members.
- Creating an integrated pipeline to jobs, economic opportunity, and community wealth-building to advance racial equity will contribute to a just society.



**USAID**  
FROM THE AMERICAN PEOPLE



**DREAMING  
OUT LOUD**  
INC.



GERALD J. AND DOROTHY R.  
Friedman School of  
Nutrition Science and Policy

## OUR “WHY”

**“Ending food apartheid is a racial justice issue. It is a man-made phenomenon that is a function of overlapping systems of oppression — white supremacy, profit-over-people capitalism, racialized violence and discrimination, and the resultant racial wealth gap. An end means healed individuals, communities, as a part of holistic reparations. We are working to end food apartheid and close the racial wealth gap in our lifetime.”**

- Christopher Bradshaw, Executive Director



**USAID**  
FROM THE AMERICAN PEOPLE



**DREAMING  
OUT LOUD**  
INC.



GERALD J. AND DOROTHY R.  
Friedman School of  
Nutrition Science and Policy



## BLACK FARM CSA

- Booker T. Whatley, father of CSA
  - Credit for community-supported agriculture often is given to Europeans of the 1980's
  - Whatley created a system in that gave him the funds he needed to operate his business and grow exactly what his community needed
- We serve communities in D.C., MD, and VA while working with Black and Brown farmers as far as NC





## BLACK FARM CSA

- Wholesale and retail grocery subscriptions
  - Gives flexibility for frequency and pausing subscriptions
  - Allows for donations to buy subscriptions for others to use
- Fair wages and prices
  - Building generational wealth and closing racial wealth gaps by increasing market access



## FARM & FOOD HUB

- Farmers' Markets
  - Brings food access to the community
  - Allows space for vendors from the community
- Procurement & Distribution
  - Increases market access
  - Always looking to increase the diversity of healthy products



**USAID**  
FROM THE AMERICAN PEOPLE



**DREAMING  
OUT LOUD**  
INC.



GERALD J. AND DOROTHY R.  
Friedman School of  
Nutrition Science and Policy



## FARM & FOOD HUB

- Community Engagement
  - Community gardening beds
  - Events on the farm
  - Volunteering opportunities
  - Catering events in our community
- DREAM Program
  - Food business incubator program
  - Graduates are able to join the network



## ADVOCACY & NUTRITION

- Food Access Programs
  - We accept incentives at our markets and for CSA
- Ward 8 grocery store under construction
  - Ward 8 has one large grocery store and 20 years less life expectancy than more affluent neighborhoods in the city
- Food systems as a mechanism for racial justice
  - Market construction is a part of solving for health and economic outcomes in one holistic system
  - Access to food is one piece of the puzzle; must have access to healthcare and sufficient income as well for holistically healthy communities





## ADVOCACY & NUTRITION

- Farming & Business Development
  - Work to support farmers in our network with technical assistance to achieve certifications for growing healthy produce and ensuring its distribution like GAP and LFPA
  - These certifications both ensure the food produced is healthy for consumption and that farmers are able to continue operating their business according to the standards set for compliance



**USAID**  
FROM THE AMERICAN PEOPLE



**DREAMING  
OUT LOUD**  
INC.



GERALD J. AND DOROTHY R.  
Friedman School of  
Nutrition Science and Policy



# FEED THE FUTURE

The U.S. Government's Global Hunger & Food Security Initiative

## Q&A



**USAID**  
FROM THE AMERICAN PEOPLE



**GERALD J. AND DOROTHY R.**  
Friedman School of  
Nutrition Science and Policy



# FEED THE FUTURE

The U.S. Government's Global Hunger & Food Security Initiative

[www.feedthefuture.gov](http://www.feedthefuture.gov)



**USAID**  
FROM THE AMERICAN PEOPLE



**Tufts**  
UNIVERSITY

GERALD J. AND DOROTHY R.  
Friedman School of  
Nutrition Science and Policy