

# [Growing Futures: Agricultural Education from Kindergarten to College]

[October 25, 2024]

Jill Bramble

| Dr. Jewel Bronaugh

| Nia McLean

| Dr. Stephan Tubene

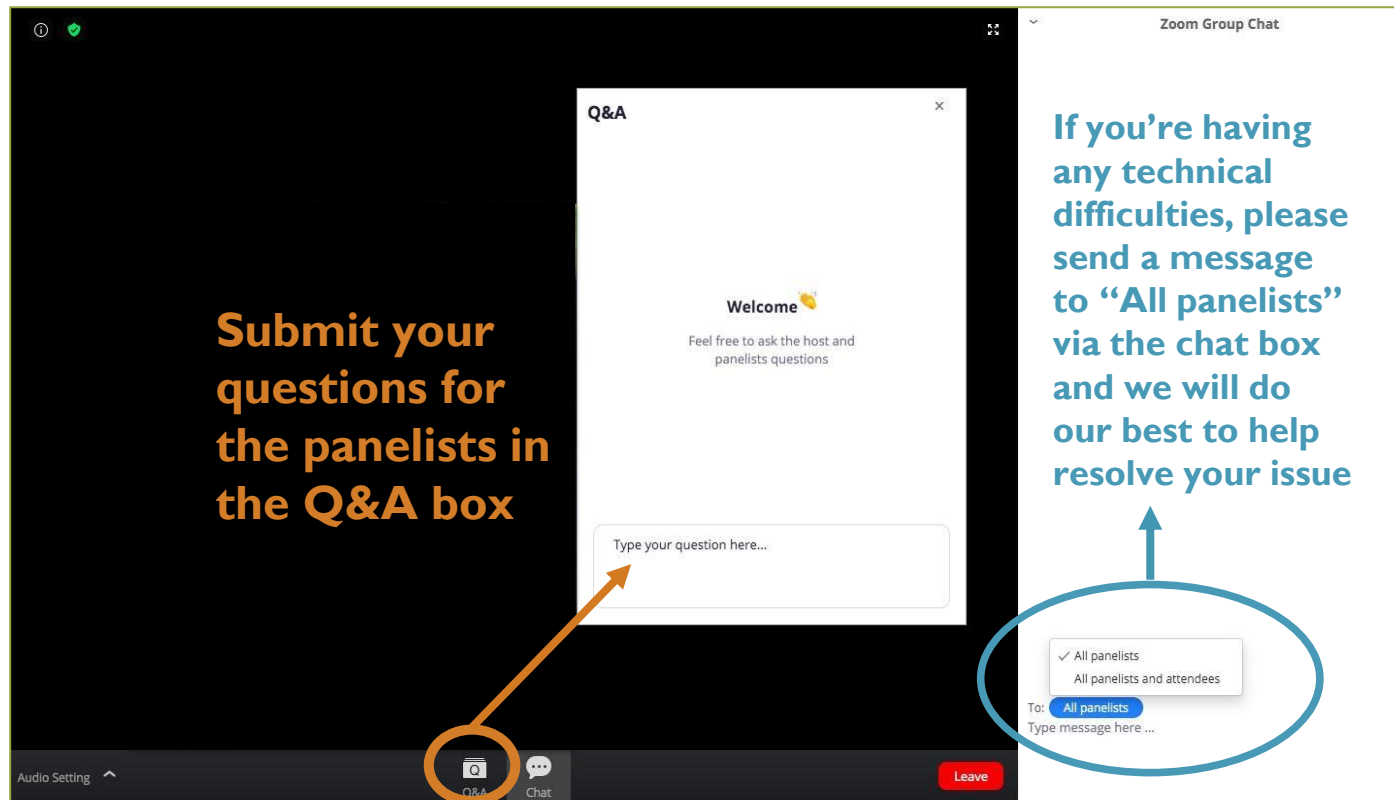


## WELCOME TO THE ZOOM WEBINAR

**If you are unable to hear, connect your speakers by selecting “Join Audio”**

**Please use the chat box to introduce yourselves and share thoughts and comments by sending a message to “All panelists and attendees”**

# Q&A AND CHAT



**Submit your questions for the panelists in the Q&A box**

**If you're having any technical difficulties, please send a message to "All panelists" via the chat box and we will do our best to help resolve your issue**

The image shows a Zoom interface with two windows. The left window is titled "Q&A" and contains a "Welcome" message and a text input field labeled "Type your question here...". An orange arrow points from the "Q&A" icon in the Zoom bottom toolbar to this input field. The right window is titled "Zoom Group Chat" and shows a message input area with a dropdown menu for recipients. The dropdown menu is open, showing "All panelists" (checked) and "All panelists and attendees". A blue circle highlights the dropdown menu, and a blue arrow points from it to the instructional text on the right.



# FEED THE FUTURE

The U.S. Government's Global Hunger & Food Security Initiative

The MSI Student Working Group Presents

## Growing Futures: Agricultural Education from Kindergarten to College

Zoom Webinar | Friday, October 25, 2024 | 10:00-11:15 am (EST)

*\*The MSI Student Working Group is a student-led group created by the Feed the Future Food Systems for Nutrition Innovation Lab & the 1890 Universities Foundation.*



Dr. Jewel Bronaugh  
President & CEO  
The 1890 Universities Foundation



Jill Bramble  
President & CEO  
The National 4-H Council



Dr. Stephan Tubene  
Department Chair of Agriculture,  
Food, and Resource Sciences  
University of Maryland Eastern Shore



Nia McLean  
Master's Student and 4-H'er  
Virginia Tech



**USAID**  
FROM THE AMERICAN PEOPLE



UNIVERSITY OF MARYLAND  
EASTERN SHORE



NATIONAL 4-H  
COUNCIL



Gerald J. and Dorothy R.  
Friedman School of  
Nutrition Science and Policy





# 4-H: Beyond Ready

**Jill Bramble**  
**President and CEO**  
*National 4-H Council*



**GERALD J. AND DOROTHY R.**  
Friedman School of  
Nutrition Science and Policy

## THE LARGEST GENERATION AT RISK

**53%**

of GenZs reported  
**loneliness**

**52%**

feel they're **failing at  
life goals.**\*\*\*

**Alarming levels  
of negativity**

about themselves,  
their confidence in  
the future, and their  
ability to find  
contentment in life.

**30%**

of youth are  
**chronically absent**  
- doubled since the  
2018-2019 school  
year.\*\*

**Teens' math  
scores dropped**

9 points and reading  
scores 4 points since  
2020 – the largest  
decreases in  
50 years.\*

## THE CHALLENGE

Missing Essential Skills  
for Future Jobs

Our K-12 schools **can't do it alone.**

**85%** of jobs in 2030 haven't  
been invented yet.\*

**77%** of employers say Focus less  
on traditional school subjects,  
more on real-world skills.\*\*

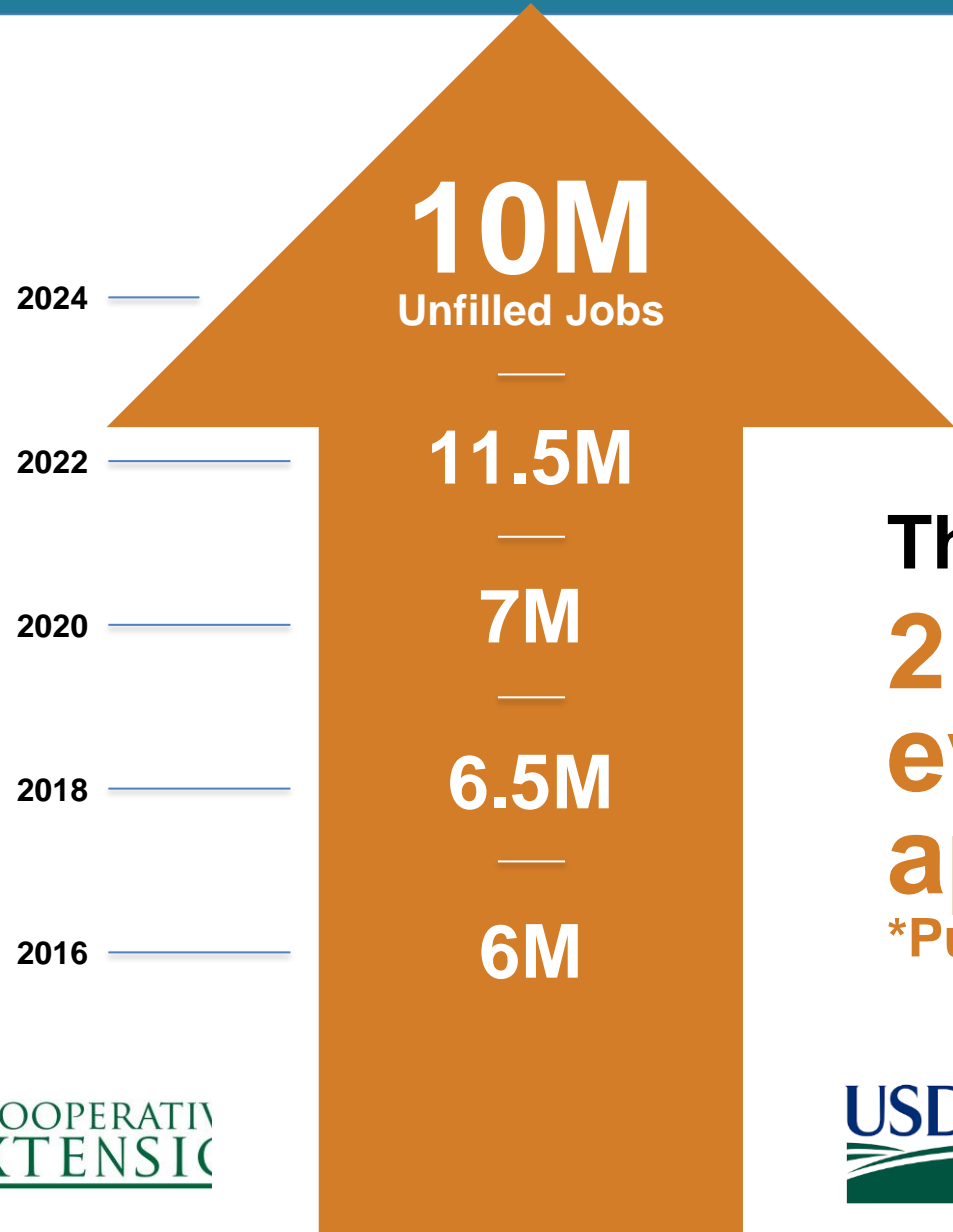
Core skills like **analytical thinking,**  
**creative thinking, resilience, flexibility,**  
and **adaptability** are key.\*\*\*





# FEED THE FUTURE

The U.S. Government's Global Hunger & Food Security Initiative



**The Current Job Gap:**  
**2 open jobs for every qualified applicant in Ag\***

\*Purdue University/USDA



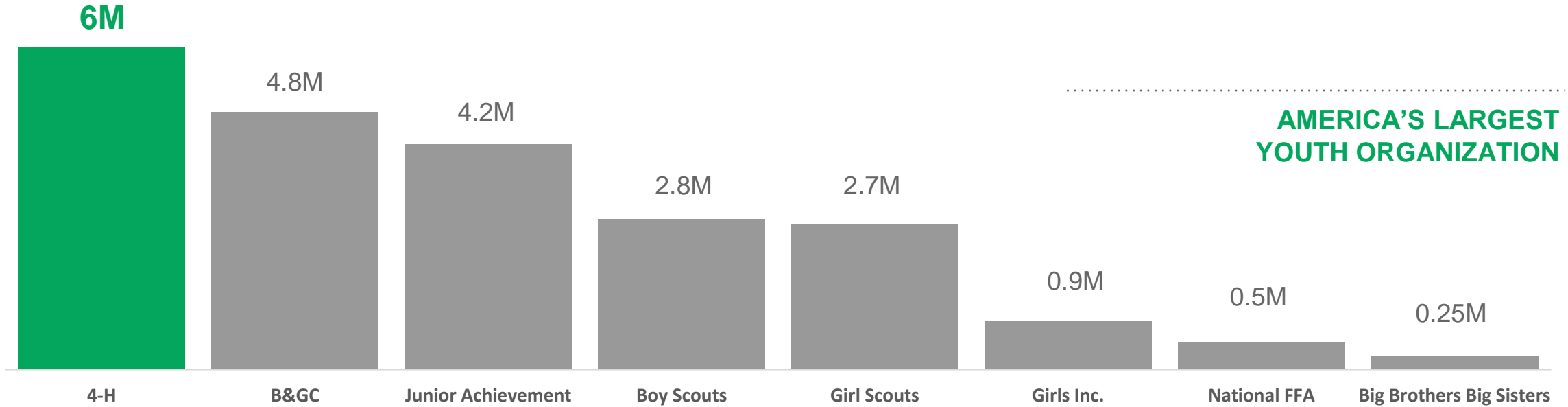
GERALD J. AND DOROTHY R. Friedman School of Nutrition Science and Policy





# FEED THE FUTURE

The U.S. Government's Global Hunger & Food Security Initiative



**AMERICA'S LARGEST YOUTH ORGANIZATION**

## Our Impact

**4X**

more likely to make contributions to their communities

**2X**

more likely to be civically active

**2X**

more likely to participate in out-of-school science programs; and

**2X**

more likely to make healthier choices



**USAID**  
FROM THE AMERICAN PEOPLE

**COOPERATIVE EXTENSION**



## Our Alumni



Across All Areas of Science & Technology, Business, Government, Education, Media and Entertainment



**GERALD J. AND DOROTHY R. Friedman School of Nutrition Science and Policy**

## A UNIQUE PUBLIC-PRIVATE PARTNERSHIP



Oversees the 4-H Name & Emblem, provides program materials, and distributes federal funding



A partnership between public land-grant universities and state and local government; develops and implements 4-H programs, oversees local offices, and provides direct guidance for volunteers.



**NATIONAL 4-H COUNCIL**

Supports national and state programs by providing federal funding, communications, brand management and legal and fiduciary services.

### County Offices

#### FAMILY & CONSUMER SCIENCE

- Nutrition Education
- Financial Education
- EFNEP
- SNAP Education
- Parenting Education

#### 4-H YOUTH DEVELOPMENT

- 6 Million Kids Ages 5-19
- 600,000 Volunteers
- 90,000 4-H Clubs
- Programs in STEM, Healthy Living, Civic Engagement

#### AG & NATURAL RESOURCES

- Livestock
- Horticulture
- Crops
- Soil
- Water
- Energy

#### COMMUNITY ECONOMIC DEVELOPMENT

- Entrepreneurship
- Leadership Education
- Small Business Development
- Rural Sustainability



## STEM

5.6M  
PROJECTS/YEAR



## Healthy Living

2.7M  
PROJECTS/YEAR



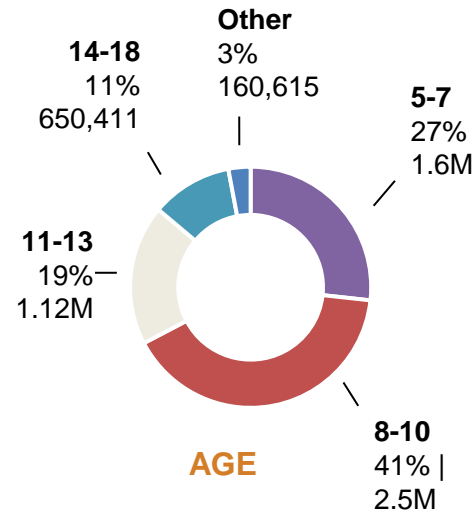
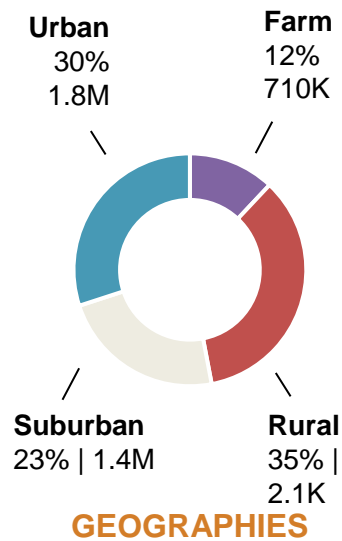
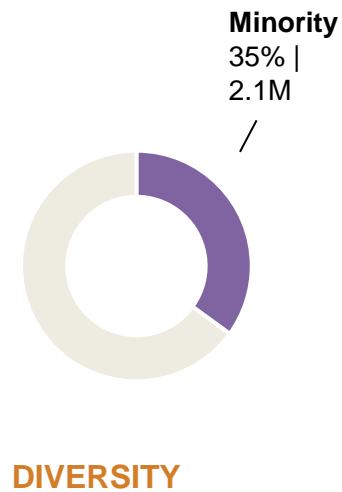
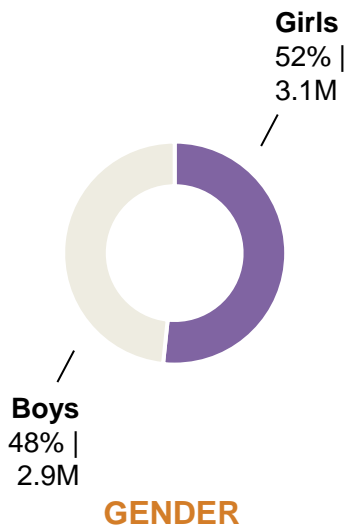
## Civic Engagement

2.4M  
PROJECTS/YEAR



## Food & Ag Science

3.1M  
PROJECTS/YEAR



## Our Delivery

3,000+  
COUNTIES

3,500+  
EDUCATORS

600,000+  
VOLUNTEERS

110  
PUBLIC UNIVERSITIES



# Agricultural Education:

# Preparing “NOW GEN” Leaders

**Jewel Bronaugh, Ph.D**  
**President/CEO**

*The 1890 Universities Foundation*



**GERALD J. AND DOROTHY R.**  
Friedman School of  
Nutrition Science and Policy



# AGRICULTURAL EDUCATION & YOUTH DEVELOPMENT

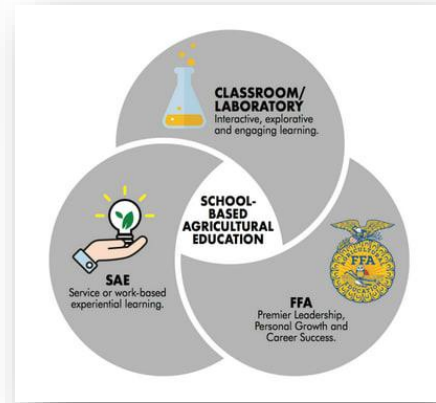
- Education
- Experiential Learning
- Professional Development
- Positive Youth Development
- Prolonged Engagement



Learning by Doing



Policy Drivers



Agriculture Literacy & Innovation



Academic & Professional Advancement



GERALD J. AND DOROTHY R. Friedman School of Nutrition Science and Policy



# FEED THE FUTURE

The U.S. Government's Global Hunger & Food Security Initiative

## THE CLASS THAT TOOK ME TO SCHOOL



- Maurice Smith
- Ronald Howell
- Herbert Brown



GERALD J. AND DOROTHY R. Friedman School of Nutrition Science and Policy



## WHY DON'T THE STUDENTS KNOW WE HAVE A FARM?



## FOOD DESERTS IN VIRGINIA

### Recommendations from the Food Desert Task Force

3. Expand current grant opportunities that allow organizations to:

- Provide funding to establish and support urban and community gardens, mobile markets, community kitchens, and food hubs
- Provide incentives for small businesses that develop local and healthy food enterprises in food desert areas
- Provide funding for Healthy Corner Store– Get Fresh programs; other states across the country are gaining needed support to run statewide programs





# VIRGINIA FOOD ACCESS & INVESTMENT FUND (VFAIF)

## Mandatory Requirements:

- Purchase a minimum of 25% of fresh products from Virginia's small, beginning, limited resource, Veteran, and/or socially disadvantaged farmers and ranchers
- Have a retail component where consumers can purchase fresh meats, seafood, dairy, produce, and/or healthy food options
- Demonstrate a history of community engagement, work in the community, and community support for the project



## FARMER STRESS & MENTAL HEALTH

To help 24/7, they can put you in touch with resources near you to get the assistance you need. The Lifeline is a U.S.-based network of 161 crisis centers that provides a toll-free hotline to anyone in suicidal crisis or emotional distress.

**Substance Abuse and Mental Health Services Administration**  
**Treatment Locator**  
 Behavioral Health Treatment Services Locator  
[findtreatment.samhsa.gov](http://findtreatment.samhsa.gov)

**Virginia Department of Behavioral Health and Developmental Services**  
[www.dbhds.virginia.gov](http://www.dbhds.virginia.gov)

The Virginia Department of Agriculture and Consumer Services would like to thank...



**You are not alone.**  
 Across the state and nation farmers struggle to cope with the effects of weather, low prices, crop losses and financial instability.



GERALD J. AND DOROTHY R. Friedman School of Nutrition Science and Policy



## USDA EQUITY COMMISSION

### Working with Farmers and Ranchers:

- Rec 13: Heirs' Property
- Rec 14: Land Access
- Rec 15: Conservation
- Rec 16: Technical Assistance
- Rec 17: Subsistence Farming
- Rec 18: FSA Loan Programs
- Rec 19: Base Acres Modernization
- Rec 20: County Committees
- Rec 21: Office of Small Farms





# FEED THE FUTURE

The U.S. Government's Global Hunger & Food Security Initiative

## REMEMBER MY STUDENTS?



- Maurice Smith
- Ronald Howell
- Herbert Brown



**USAID**  
FROM THE AMERICAN PEOPLE



**Tufts**  
UNIVERSITY

**GERALD J. AND DOROTHY R.**  
Friedman School of  
Nutrition Science and Policy





# FEED THE FUTURE

The U.S. Government's Global Hunger & Food Security Initiative



**Dr. Maurice Smith**  
USDA/NIFA Program Leader



**Mr. Herbert Brown, Owner**  
Browntown Farms  
USDA 1890 Liaison



**Dr. Ronald Howell**  
USDA FSA State Executive  
Director



GERALD J. AND DOROTHY R.  
Friedman School of  
Nutrition Science and Policy



Agriculture in Ordinary Places:  
The Power of Informal Agricultural Education

**Nia McLean**

**Graduate Student – Department of Agricultural, Leadership, and Community Education**

*Virginia Tech University*





# FEED THE FUTURE

The U.S. Government's Global Hunger & Food Security Initiative



Image Source: Groundwork Somerville, <https://groundworksomerville.org>



**USAID**  
FROM THE AMERICAN PEOPLE

**VT**  
VIRGINIA TECH.



**N.C. A&T**  
STATE UNIVERSITY

**Tufts**  
UNIVERSITY

GERALD J. AND DOROTHY R.  
Friedman School of  
Nutrition Science and Policy





# FEED THE FUTURE

The U.S. Government's Global Hunger & Food Security Initiative



Standing in the community garden at the North Carolina A&T University Farm with Interim Communication Director Lydian Bernhardt.



Community Garden Leadership trainees weeding at a local community garden in Greensboro, NC.



**USAID**  
FROM THE AMERICAN PEOPLE

**VT**  
VIRGINIA TECH.



**N.C. A&T**  
STATE UNIVERSITY

**Tufts**  
UNIVERSITY

**GERALD J. AND DOROTHY R.**  
Friedman School of  
Nutrition Science and Policy





# FEED THE FUTURE

The U.S. Government's Global Hunger & Food Security Initiative



Students measure rows for spring onions.



Braiding palm leaves into the garden fence.



Students help each other weed the garden.



Posing with freshly harvested tomatoes!



Students studying one of the many plants on the garden.



**USAID**  
FROM THE AMERICAN PEOPLE



**N.C. A&T**  
STATE UNIVERSITY



**GERALD J. AND DOROTHY R.**  
Friedman School of  
Nutrition Science and Policy





# FEED THE FUTURE

The U.S. Government's Global Hunger & Food Security Initiative



The Kobina Ansa 4-H club chaplain leads classmates in a prayer during practice for the national club meeting contest.



Kobina Ansa JHS 4-H club officers, 2024 national club meeting contest champions!



**USAID**  
FROM THE AMERICAN PEOPLE



**GERALD J. AND DOROTHY R.**  
Friedman School of  
Nutrition Science and Policy



# FEED THE FUTURE

The U.S. Government's Global Hunger & Food Security Initiative

## Q&A



**USAID**  
FROM THE AMERICAN PEOPLE



**GERALD J. AND DOROTHY R.**  
Friedman School of  
Nutrition Science and Policy





# FEED THE FUTURE

The U.S. Government's Global Hunger & Food Security Initiative

[www.feedthefuture.gov](http://www.feedthefuture.gov)



**USAID**  
FROM THE AMERICAN PEOPLE



GERALD J. AND DOROTHY R.  
Friedman School of  
Nutrition Science and Policy